

PIAZZA

To preserve the elegance and charm of the «Sechseläuten» square in Zurich, the covers of the underground distributors are filled with quartz sand and merge practically unseen into the environment.

Project:	PIAZZA, Sechseläutenplatz Zurich
Specification:	elegant and practical solution for local power supplies
Solution:	PIAZZA underfloor distributor systems with filled covers, just like the square with Vals quartzite
Articel:	PIAZZA (Item no.: 138620/138621)
Number of pieces:	6 double underfloor distributor systems and 10 simple underfloor distributor systems

Initial position

The Sechseläutenplatz is thrust into the public eye several times over the course of the year - with the «burning of the Böög», the Circus Knie and Knabenschiessen, as well as other popular events. In accordance with the new architectural design, Zurich's «Piazza Grande» should be recreated in the style of different cities, and all within an area of 15'000m². The square should captivate with its simplicity and size, while becoming an attractive meeting place.

The laying of light Vals quartzite goes hand in hand with this; it provides the square with a unique look.

With particular regard to the many events, the owners felt it was also important to implement an elegant and practical solution for the local power supply. A solution with provisional power distributors, cable bridges etc. was completely ruled out, because the square should stand out through its beautiful space.

As a specialist in underfloor distribution for large areas, this is where GIFAS comes into the picture. Through close cooperation with the owners and our metal workers in particular, a solution that was pleasing and tailor-made for all parties could be developed.

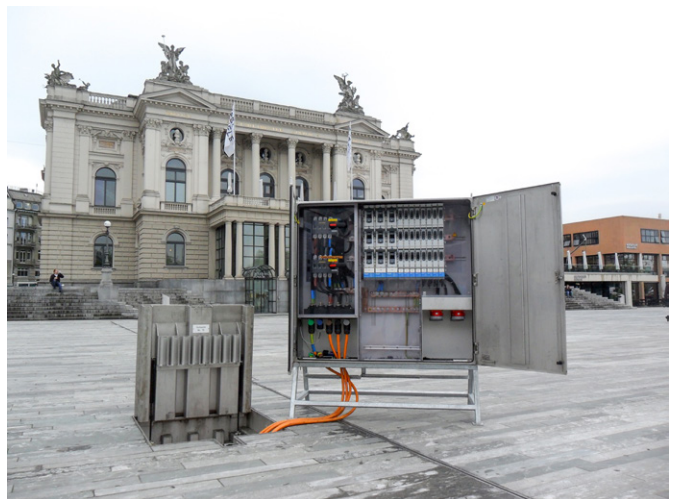
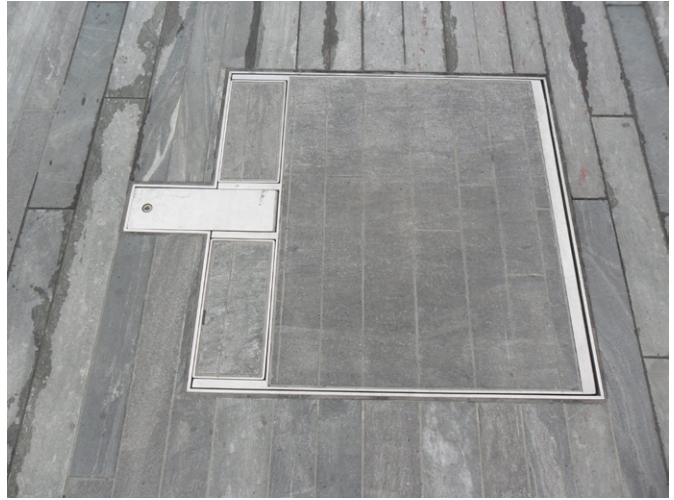
- 6 double underfloor distribution systems with dimensions of 100 cm x 200 cm
- 10 simple underfloor distribution systems at 100 cm x 100 cm
- both variations in the V2A version.

In order to unobtrusively and cleanly integrate the underfloor distribution systems within the design of the square, the cover was filled with the corresponding Vals quartzite

Customer value

On-site power, unobtrusively integrated within the design of the square.

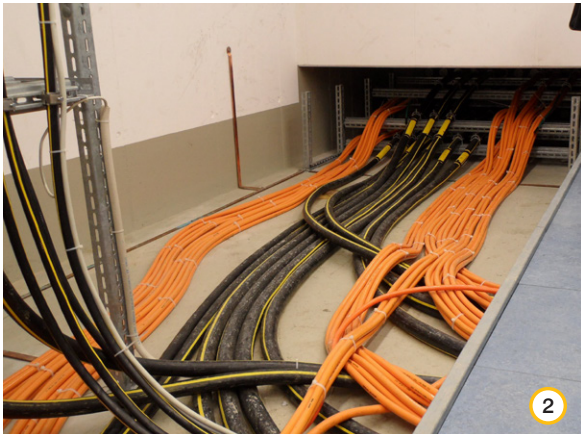




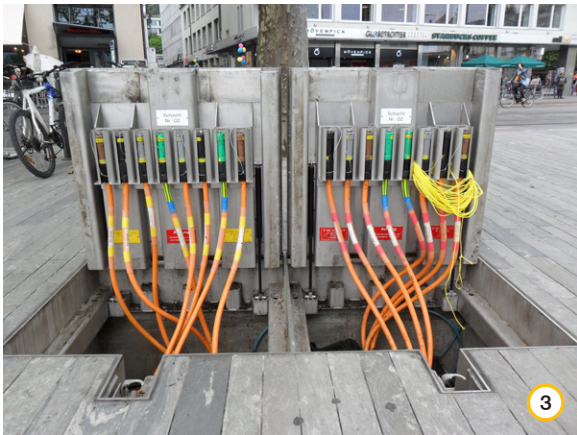
Sechsläuteplatzpower supplyconcept



Distribution centre underneath Sechsläuteplatz



Underground supply cable to the GIFAS floor boxes (type: PIAZZA special).



PIAZZA floor box with individual conductor connections, connects to GIFAS PowerSAFE 800A system.



GIFAS 800A distribution cabinet with robust, rustproof design. Feeds 2x400 A, connectable to PowerSAFE Panelbox. Direct output via NH and connectable CEE 125 + 63 A

Examples

